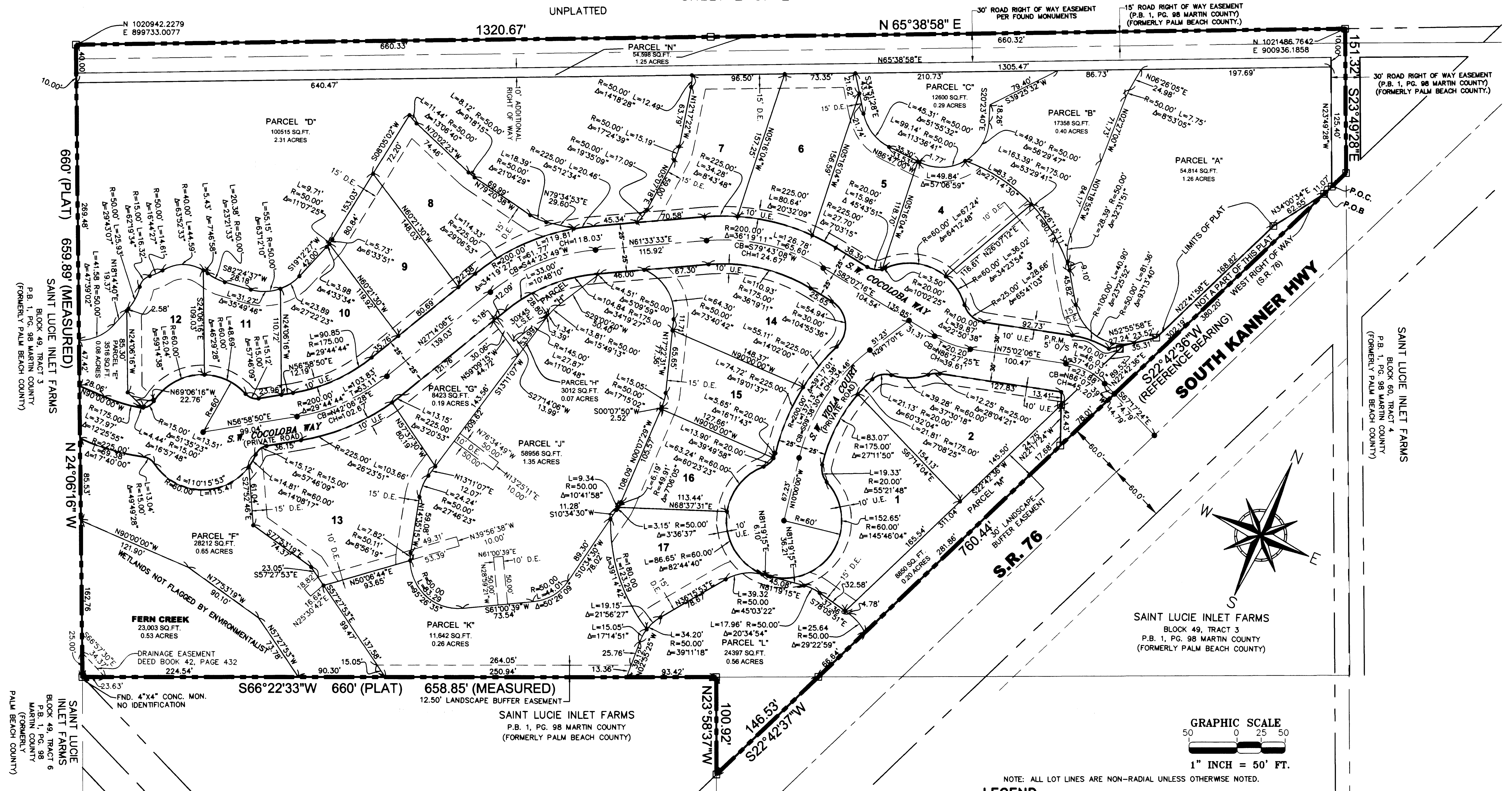


OSPREY RIDGE P.U.D.

BEING A REPLAT OF
TRACT 2 & PART OF TRACTS 1 & 8, BLOCK 49
SAINT LUCIE INLET FARMS (P.B.1, P.G. 98)
HANSON GRANT, TOWNSHIP 38 SOUTH, RANGE 41 EAST, MARTIN COUNTY, FLORIDA.
SHEET 2 OF 2



GENERAL NOTES

- A. BEARINGS AS SHOWN HEREON ARE BASED ON STATE PLANE COORDINATES, NAD 83/90, FLORIDA EAST ZONE, REFERENCE A BEARING "S22°42'36\"W" OF THE WEST RIGHT OF WAY LINE OF S.R. 76.
- B. THIS PLAT, AS RECORDED IN ITS ORIGINAL FORM IN THE PUBLIC RECORDS, IS THE OFFICIAL DEPICTION OF THE SUBDIVIDED LANDS DESCRIBED HEREON AND WILL IN NO CIRCUMSTANCES BE SUPPLANTED IN AUTHORITY BY ANY OTHER FORM OF THE PLAT, WHETHER GRAPHIC OR DIGITAL.
- C. NOTICE: THERE MAY BE ADDITIONAL RESTRICTIONS THAT ARE NOT RECORDED ON THIS PLAT THAT MAY BE FOUND IN THE RECORDS OF THIS COUNTY.
- D. IN THE EVENT THAT MARTIN COUNTY DISTURBS THE SURFACE OF A PRIVATE STREET DUE TO MAINTENANCE REPAIR OR REPLACEMENT OF A PUBLIC IMPROVEMENT LOCATED THEREIN, THEN THE COUNTY SHALL BE RESPONSIBLE FOR RESTORING THE STREET SURFACE TO THE EXTENT WHICH WOULD BE REQUIRED IF THE STREET WERE A PUBLIC STREET, IN ACCORDANCE WITH COUNTY SPECIFICATIONS.

SYMBOLS

- SET NO. 5 IRON ROD AND CAP "BL LB 6852"
- ⊙ SET NAIL AND DISK (PCP)
- SET 4X4 CONCRETE MONUMENT WITH ALUMINUM DISC "BETSY LINDSAY, INC. PRM LB 6852" (PRM) UNLESS OTHERWISE NOTED.
- DISTANCE BEARING
- POINT OF CHANGE OF DIRECTION

LEGEND

- | | | | | | |
|-------|-----------------------|--------|------------------------------|--------|------------------|
| AC. | ACRES | LB | LICENSED BUSINESS | R | RADIUS LENGTH |
| L | ARC LENGTH | L.S.E. | LIFT STATION EASEMENT | SQ.FT. | SQUARE FEET |
| BL | BETSY LINDSAY, INC. | MON. | MONUMENT | S.R. | STATE ROAD |
| CL | CENTER LINE | NAD | NORTH AMERICAN DATUM | T | TANGENT LENGTH |
| Δ | CENTRAL (DELTA) ANGLE | NO. | NUMBER | U.E. | UTILITY EASEMENT |
| CB | CHORD BEARING | O.R.B. | OFFICIAL RECORDS BOOK | | |
| CH | CHORD LENGTH | PG. | PAGE | | |
| CONC. | CONCRETE | P.O.B. | POINT OF BEGINNING | | |
| D.B. | DEED BOOK | P.O.C. | POINT OF COMMENCEMENT | | |
| D.E. | DRAINAGE EASEMENT | PRM | PERMANENT REFERENCE MONUMENT | | |
| FND. | FOUND | P.B. | PLAT BOOK | | |

NOTE: IT SHALL BE UNLAWFUL TO ALTER THE APPROVED SLOPES, CONTOURS, OR CROSS SECTIONS OR TO CHEMICALLY, MECHANICALLY, OR MANUALLY REMOVE, DAMAGE, OR DESTROY ANY PLANTS IN THE LITTORAL OR UPLAND TRANSITION ZONE BUFFER AREAS OF CONSTRUCTION LAKES EXCEPT UPON THE WRITTEN APPROVAL OF THE MARTIN COUNTY GROWTH MANAGEMENT DIRECTOR, AS APPLICABLE. IT IS THE RESPONSIBILITY OF THE OWNER OR OSPREY RIDGE HOMEOWNERS ASSOCIATION, INC., ITS SUCCESSORS OR ASSIGNS TO MAINTAIN THE REQUIRED SURVIVORSHIP AND COVERAGE OF THE RECLAIMED UPLAND AND PLANTED LITTORAL AND UPLAND TRANSITION AREAS AND TO ENSURE ONGOING REMOVAL OF PROHIBITED AND INVASIVE NONNATIVE PLANT SPECIES FROM THESE AREAS.

B BETSY LINDSAY, INC.
SURVEYING AND MAPPING
7967 S.W. JACK JAMES DRIVE, STUART, FLORIDA 34967
(772) 286-5753 (772) 286-5933 FAX
LICENSED BUSINESS NO. 6852
OSPREY RIDGE P.U.D. SHEET 2 OF 2